

Star★Types

by Michael Erlewine

C O M P A T I B I L I T Y



StarTypes Compatibility Report for:
Tina Turner and Chart Transit

This reading compliments of:

Chart Compliments of
The Psychic Link
Sanford, FL 32773
407-674-2062

Welcome



Welcome to StarTypes, your personal astrology report written and illustrated by astrologer/author Michael Erlewine who, with over 40 years of experience in astrology, has written some twenty-some books on astrology and dozens of computer astrological programs. Erlewine writes:

"I have lectured, taught classes, and done private consultations for more years than I want to think about. What I have found works best is a one-to-one presentation of the astrological chart - your personal astrology. In the StarTypes reports, I have tried to do just that: walk you through what is most important about your astrology chart, step-by-step, just as I would if we sat down together for a chart reading. StarTypes Reports are illustrated and easy to read. After all, they are all about you!"

Patterns in the Sky



StarTypes astrology is both ancient and modern. It is ancient, because it uses the traditional natal chart that astrologers have used throughout history. It is modern because it also takes advantage of what astronomers have learned about the heavens and our solar system in these modern times. The result is a unique combination of ancient and modern astrology that provides a unique perspective on your particular birth chart and therefore your life. This is how it works:

StarType analysis plots large-scale planetary patterns as seen from Earth and compares those patterns to corresponding patterns astronomers see functioning throughout our entire solar system. StarTypes charts not only the outer circumstances of your birth (your personality and Karma), but also the internal and spiritual qualities embedded in that same moment, your inner motivation, what has been called your Dharma or Life Path. The result is an enhanced perspective that in effect amounts to a stereo image of your birth moment and chart, looking inside and out.

StarTypes analysis offers a very complete perspective on your birth moment, with insights into what talents you naturally have, how those talents might be used, as well as your relationship role with partners, romantic and otherwise. Check it out. What follows is your own StarType report. I hope you enjoy it.

Michael Erlewine, Author of StarTypes



StarType for Tina

The heavens above and surrounding us are in constant change as the Sun, Moon, and planets move in their orbits to create vast kaleidoscope-like patterns in the sky, what has been rightly called "The Cosmic Dance." StarType analysis sorts through these many changing patterns and isolates the strongest and most pronounced pattern in effect at the moment of your birth. This cosmic pattern or archetype is your "StarType," and it best represents what is happening in the heavens at the moment of your birth. All in all there are some sixty major StarType patterns that have been recognized, and each represents a particular kind of individual and approach to life.

Your StarType is more than just your personality and the circumstances in which you happen to find yourself in life. It also describes who you are at heart, the real inner you behind all that is going on the outside, plus your possibilities - how you look at and approach life. StarTypes reveal the 'you' as only your closest friends know you, as you know yourself. What follows is a description of our StarType.



This StarType:

Tina has a very independent StarType that has both strong mental and practical ability, but of the two, the mental is much more strongly accented. More than mental, this type of chart has spiritual and even visionary overtones, an almost mystic vision-like sense of life. This is not all pie-in-the-sky talk, but a vision that is connected to the practical in a very direct manner. He can bring what he envisions down to earth and tie it into actual manifestation.



StarType for Transit

The heavens above and surrounding us are in constant change as the Sun, Moon, and planets move in their orbits to create vast kaleidoscope-like patterns in the sky, what has been rightly called "The Cosmic Dance." StarType analysis sorts through these many changing patterns and isolates the strongest and most pronounced pattern in effect at the moment of your birth. This cosmic pattern or archetype is your "StarType," and it best represents what is happening in the heavens at the moment of your birth. All in all there are some sixty major StarType patterns that have been recognized, and each represents a particular kind of individual and approach to life.

Your StarType is more than just your personality and the circumstances in which you happen to find yourself in life. It also describes who you are at heart, the real inner you behind all that is going on the outside, plus your possibilities - how you look at and approach life. StarTypes reveal the 'you' as only your closest friends know you, as you know yourself. What follows is a description of our StarType.



This StarType:

Here is another quite independent StarType, one with great mental powers, albeit folded in on themselves, and all converging to a single practical point, like a laser beam. Transit's mind always has a very practical point of focus that cuts through a problem like the tip of a blowtorch. His very strong ability to think and focus tends to be somewhat inward oriented and almost recursive, in that his mind very much guides the hand that does the work, and with great precision.

Approach to Relationships



Approach to Relationships - Tina



Relationally, Tina is independent, and need not depend on a partner to feel complete. He is quite operative just as he is, on his own. However, he might do best in a relationship with someone much more sense-oriented and purely physical (less mental) than he is. The red-bordered cards are what is being suggested here, a partner who would help to ground that vision of his, even more than he can do himself. He would assume the caretaker role, the "Lover" in such a relationship, and they would be, of course, the "Loved One."

Approach to Relationships



Approach to Relationships - Transit



As for relationships, Transit is pretty much of an independent nature, and his need for relationships is somewhat limited. He can take them or leave them, but when he is cooking on some project, he tends not to need them, and they seldom even come up on his radar screen. At other times, he runs around looking for a relationship, like he is missing something. The fact is Transit needs relationships once and a while, but mostly he is pretty much self complete and likes his independence.



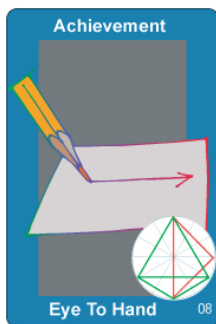
Things Are Not Always What They Seem - Tina

Inner StarType

Things are not always what they seem, especially when meeting someone for the first time. How do those around you see you? Are you a "What You See Is What You Get" type or are you a "What You See is Not What You Get" type. Are you different once folks get to know you? StarTypes has a way of measuring the difference.

On the following page is a comparison of the traditional astrology chart of the outer appearances of this individual (personality), the way this person comes across AND the chart of their inner Self (Dharma chart), the individual as they are when you come to know them better. This will give you an idea if what you see is in fact what you get.

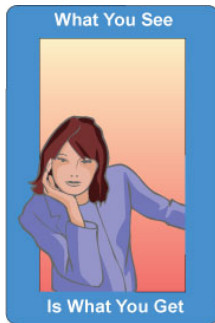
Your Inner and Outer StarTypes



Outer StarType

Above find your inner and outer StarType cards. Perhaps the more important of the two is the inner StarType, the one on the left. This is what is called your Dharma of Life-Path Chart. It is who you are inside, as people get to know you. This is your heart essence, how you function in this world.

On the right is the chart of how you appear to others, your personality, the way you come across upon first contact - the initial impression. These two cards can be similar in type and function or very different. If the border color of the cards is the same (green, red, blue, or rose), then you are more-or-less how you appear, that is: what you see is what you get. If they are different colors, then you may be quite different on first impression than you are when people get to know you. In that case, what you see is not what you get.



StarType Appearances

You Are What You Appear To Be

There is no difference between how this person appears and how they are when you get to know them. What you see is what you get. Tina is Very idea oriented, at home in the mind, perhaps a little shy or awkward socially, but very wordy, interested in the psychological and the philosophical. Caring for others, and compassionate, but also very practical, putting pen to paper, getting things done.



Things Are Not Always What They Seem - Transit

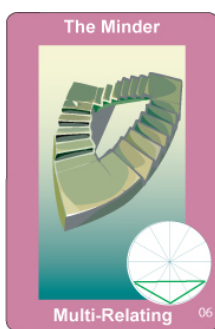
Things are not always what they seem, especially when meeting someone for the first time. How do those around you see you? Are you a "What You See Is What You Get" type or are you a "What You See is Not What You Get" type. Are you different once folks get to know you? StarTypes has a way of measuring the difference.

On the following page is a comparison of the traditional astrology chart of the outer appearances of this individual (personality), the way this person comes across AND the chart of their inner Self (Dharma chart), the individual as they are when you come to know them better. This will give you an idea if what you see is in fact what you get.

Your Inner and Outer StarTypes



Inner StarType



Outer StarType

Above find your inner and outer StarType cards. Perhaps the more important of the two is the inner StarType, the one on the left. This is what is called your Dharma of Life-Path Chart. It is who you are inside, as people get to know you. This is your heart essence, how you function in this world.

On the right is the chart of how you appear to others, your personality, the way you come across upon first contact - the initial impression. These two cards can be similar in type and function or very different. If the border color of the cards is the same (green, red, blue, or rose), then you are more-or-less how you appear, that is: what you see is what you get. If they are different colors, then you may be quite different on first impression than you are when people get to know you. In that case, what you see is not what you get.



StarType Appearances

You Are NOT What You Appear To Be

On the surface Transit appears Enthusiastic, eager to experience and learn, to meet new people and see new places. More mental than physical, very detail oriented..

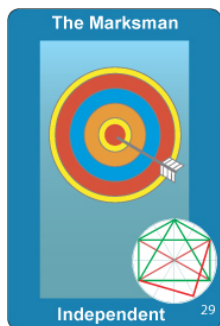
Appearances aside, Transit in fact is Independent, sometimes a little distant. Quite practical, with some vision, and able to manage most things. Balanced.

Star★Types Relationships

The table on this page represents the essential StarType elements for each partner, and not just the key StarType for each. These main elements are marked with a checkmark along the left and right sides of the table, along with how many times they occur, their StarType number, and a percentage indication as to how strong the element is (100% is the strongest possible). The four basic relationship types are color-coded from top to bottom, with green for the [Lover] StarType, red for the [Loved One] StarType, blue for the [Independent] StarType, pink for the [Multi-relational] StarType, and yellow for other types.

The purpose of the table is to let you see at a glance the various components of the relationship and their strengths.

Tina



Transit



Occ.	ST#	%	Description	%	ST#	Occ.	
			Compassionate, Big Picture, Lover				
✓ 3	#5	90%	Proactive, Entrepreneurial				
			Alternate View	53%	#42	1	✓
			Psychological, Mental, Complex				
✓ 6	#50	01%	Caring, Mental Work	27%	#21	2	✓
			Little Obsessive, Recursive Mind				
			Seminal, Deep				
✓ 5	#1	53%	Attractive, Gregarious, People Loving	53%	#1	2	✓
			Busy Achiever, Doing, Doing				
			Very Independent, Self-sufficient				
			Creative: Acts, then Thinks				
✓ 0	#8	89%	Conceptual: Thinks, Then Does				
✓ 0	#29	72%	Very Active Psychological, Mystic				
			Psychological, Spiritual Doer				
			Laser Mind, Can Think and Do	19%	#35	0	✓
✓ 1	#30	68%	Enjoys Many Contacts, Many Places	68%	#30	2	✓
			Reactive, Responds to Anything				
			Yearning, Waiting, Wishing	52%	#23	1	✓
			Extra Creativity	45%	#44	1	✓
			Synchronicity, Coincidence	89%	#46	1	✓
			Completion	50%	#51	1	✓



For Tina

Tina has a very independent StarType that has both strong mental and practical ability, but of the two, the mental is much more strongly accented. More than mental, this type of chart has spiritual and even visionary overtones, an almost mystic vision-like sense of life. This is not all pie-in-the-sky talk, but a vision that is connected to the practical in a very direct manner. He can bring what he envisions down to earth and tie it into actual manifestation. Relationally, Tina is independent, and need not depend on a partner to feel complete. He is quite operative just as he is, on his own. However, he might do best in a relationship with someone much more sense-oriented and purely physical (less mental) than he. The red-bordered cards are what is being suggested here, a partner who would help to ground that vision of his, even more than he can do himself. He would assume the caretaker role, the "Lover" in such a relationship, and they would be, of course, the "Loved One." Tina is pretty much independent, but still would have a powerful relationship with the very down-to-earth Grand Cross, the #3 Star*type. As for other blue-bordered (independent) cards like himself, he would have the best chance of a stable relationship with any of the blue-bordered cards that have what is called a Grand Cross in them, which is a 4-sided red square. **KEYWORDS**

- The Loved One.
- Charismatic.
- Center of Attention.
- Intuitive.
- Touchy Feely.
- Conceptual.
- Psychological.
- Introspective.



For Transit

Here is another quite independent StarType, one with great mental powers, albeit folded in on themselves, and all converging to a single practical point, like a laser beam. Transit's mind always has a very practical point of focus that cuts through a problem like the tip of a blowtorch. His very strong ability to think and focus tends to be somewhat inward oriented and almost recursive, in that his mind very much guides the hand that does the work, and with great precision. As for relationships, Transit is pretty much of an independent nature, and his need for relationships is somewhat limited. He can take them or leave them, but when he is cooking on some project, he tends not to need them, and they seldom even come up on his radar screen. At other times, he runs around looking for a relationship, like he is missing something. The fact is Transit needs relationships once and a while, but mostly he is pretty much self complete and likes his independence. Again, independent, but Transit could benefit from the green-bordered StarTypes, in particular the ones with the large green triangles in them. As for the blue-bordered cards, not shown here, keep in mind that they have the qualities of both the red-bordered and the green-bordered cards within their makeup. When relating to them, he will want to invoke the care-giving and advice giving aspect of them. Call out the lover in them, with him being the loved one that they care for. **KEYWORDS**

- The Loved One.
- Charismatic.
- Center of Attention.
- Intuitive.
- Touchy Feely.
- Care Giver.
- Service Oriented.
- Uses Mind.

Relationship List



Relationships - Tina



Relationships:

Tina is quite independent and does not always need to be in a relationship.

Romantic Role:

Tina is independent when it comes to relationships, and alternately can play the role of either the "Lover" or the "Loved One," depending on what the other partner requires.

Office Role:

In an office environment, Tina is best in mid-level management and can play to either management or to the workforce.

Independent:

Yes.

Interdependent:

No.

Needy:

No.

Relationship List



Relationships - Transit



Relationships:

Transit is quite independent and does not always need to be in a relationship.

Romantic Role:

Transit is independent when it comes to relationships, and alternately can play the role of either the "Lover" or the "Loved One," depending on what the other partner requires.

Office Role:

In an office environment, Transit is best in mid-level management and can play to either management or to the workforce.

Independent:

Yes.

Interdependent:

No.

Needy:

No.

Basic Compatibility

- Naturally compassionate
- Aware of others
- Generally kind
- Solid management talent
- Not a touchy-feely type of person
- A bit of a dreamer
- Thinks outside the box
- High energy
- Runs to matters of the mind
- Is not much fun
- Abstract
- Meticulous
- Too much theory
- Appreciative of social situations
- Not a people person
- Lack of enthusiasm
- High energy
- Ambitious
- Driven to succeed
- Grasp concepts
- Pick out patterns
- Persistent drive
- A bit of a dreamer
- The Entrepreneur
- Thoughtful, careful, and meticulous
- Not a people person
- Enthusiasing others
- Runs cool, not warm
- A good group leader
- A great advisor or consultant



Tina: StarType #29, "The Marksman"

Transit: StarType #35, "The Artisan"

Two independent types, with Transit being somewhat less so than Tina. Either way, Transit does not bring anything to the relationship that Tina does not already have going for himself. Both have strong minds. Both have will power and the ability to manifest ideas in work. Aside from cooperative efforts on one task or another, I don't see the compelling chemistry here.

Lovers Comparison



The outlook is somewhat sketchy for this relationship, but of course not impossible. Basically, what we have here are two roughly identical types, neither especially suited to taking up a particular relationship role. In fact, both Tina and Transit are quite independent, meaning simply that relationships of any kind are not as important to them as to the average person.

Both partners here have good minds, and basic common sense, in that they know how to put their minds to work in a practical manner. Of the two, Tina is the more mental, and probably finds philosophy, psychology, and inspirational topics in general of interest. Transit is more modest in these areas, but is very good at taking care of detail work.

The question here has to be, who among them wants to assume which role to make this relationship actually work. The answer to this question cannot be settled easily, and will require that the two sit down and work out who will be the worrier (the lover) and who the loved one and object of affection. If that can be determined, there is chemistry; if not, there is no chemistry.

The Inner Relationships



Tina and Transit operate at about the same speed and are almost identical types, so don't expect too much chemistry here. Instead, their relationship will be driven by common goals and aptitudes. They are really a lot alike, both very independent, not always that much aware of others, and usually fairly self-absorbed and a world to themselves, that is: each of them in their own world.

Socially they mix with others, like to have fun, and are not shy in a group. In fact, both these two let and usually manage to get attention when they are out with the crowd. And both have their mental or intellectual sides, as well, although in this department Tina is probably hands-down the leader or instigator. Both are verbal.

Tina's intellectual interests probably run to the esoteric or at least the psychological, and he may become very involved (and lost in) anything with a spiritual, new-age, and alternative theme. Tina really gets into this stuff, and Transit probably tags along as a good listener. And these two are not all talk and no action. Both can get the job done, put their ideas to work, and be practical.

Profile Summary



Profile Summary for Tina



Tina is very management oriented, facile at using the mind, grasping ideas and patterns with ease, and perfect for overseeing, supervision, and higher-level management decisions. He also possesses a natural sense of psychology, an ability to psych out and understand how the mind works, in general, and in particular cases. Tina is thoughtful, careful, and very eager and future oriented. All of this psychological and theoretical leaning is balanced by a very practical side, the ability to see ideas into the practical level - to make things happen.

Tina would make an excellent mid-level manager, mostly on the side of upper management, but still sensitive to the needs of the work staff. As mentioned above, he is naturally interested in the spiritual, philosophical, and psychological, and would make an excellent counselor. However, Tina is sometimes just a little too mental rather than physical, and can tend to get lost in the workings of the mind. He can benefit from higher-level management skills. There is a tendency for him to fall into a mental syndrome from time to time and to sit and spin his wheels.

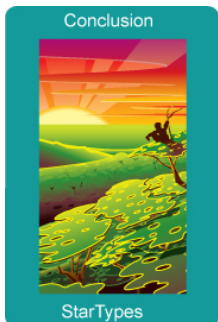
Profile Summary for Transit



Transit has both people and management skills, with the people skills being perhaps the more pronounced of the two. He can get right in there with a work team and understand their point of view. In fact, he shares it. But Transit also has good understanding, a strong mind, and an innate receptivity that does not miss much. Combined, he can understand ideas and put them to work - hit the nail on the head. Transit is probably most valuable at the mid-management levels, working with both management and the work team. He would tend to take the side of the staff or workers in negotiations, but he does speak both languages.

Transit is strong on the practical side, but does not always understand the larger patterns of business, the "big picture." He can get emotional, based on what he does understand, which may be incomplete. He does not always take the long-term approach to planning. Also may get lazy and depend on his people skills, at the expense of his responsibilities.

Conclusion



This concludes your StarType Compatibility Report. In this report we have tried to point out not only the individual characteristics of each partner and how they might approach relationships, but also how the two partners may interface and get along. StarTypes compatibility represents the potential for the relationship and the relationship roles each of the partners naturally find comfortable. We hope you have enjoyed it.